

PLEASE NOTE: FURTHER EDUCATION = Level 3 courses, HIGHER EDUCATION = courses at level 4 and above

We have tried to include the major progression routes, however individuals may be able to progress via other routes. The information in this flowchart was correct at the time of going to print, however the following exclusions apply:

- Not every receiving institution will accept any level 3 qualification as an A level equivalent
- Not all of the above qualifications involve full-time study; many can be studied part time OR whilst in employment
- We have not been able to include subject specific qualifications such as CACHE or Foundation Art
- Many performing Arts qualifications e.g. ABRSM/ GSMD/ Trinity/ TVU and also British Horse Society Awards can provide additional UCAS points
- Additional entry and level 1,2 and 3 qualifications are available from ASDAN
- We have not included GNVQ/ AVCE as these are being phased out
- There are many work specific qualifications available e.g. CIM, ITEC, YMCA
- You do not necessarily have to work through the levels from entry up e.g. mature students with appropriate work experience may be able to study for a degree level qualification



GCSEs
 as a starting point for progression
 These are the web addresses of the main GCSE examining bodies:

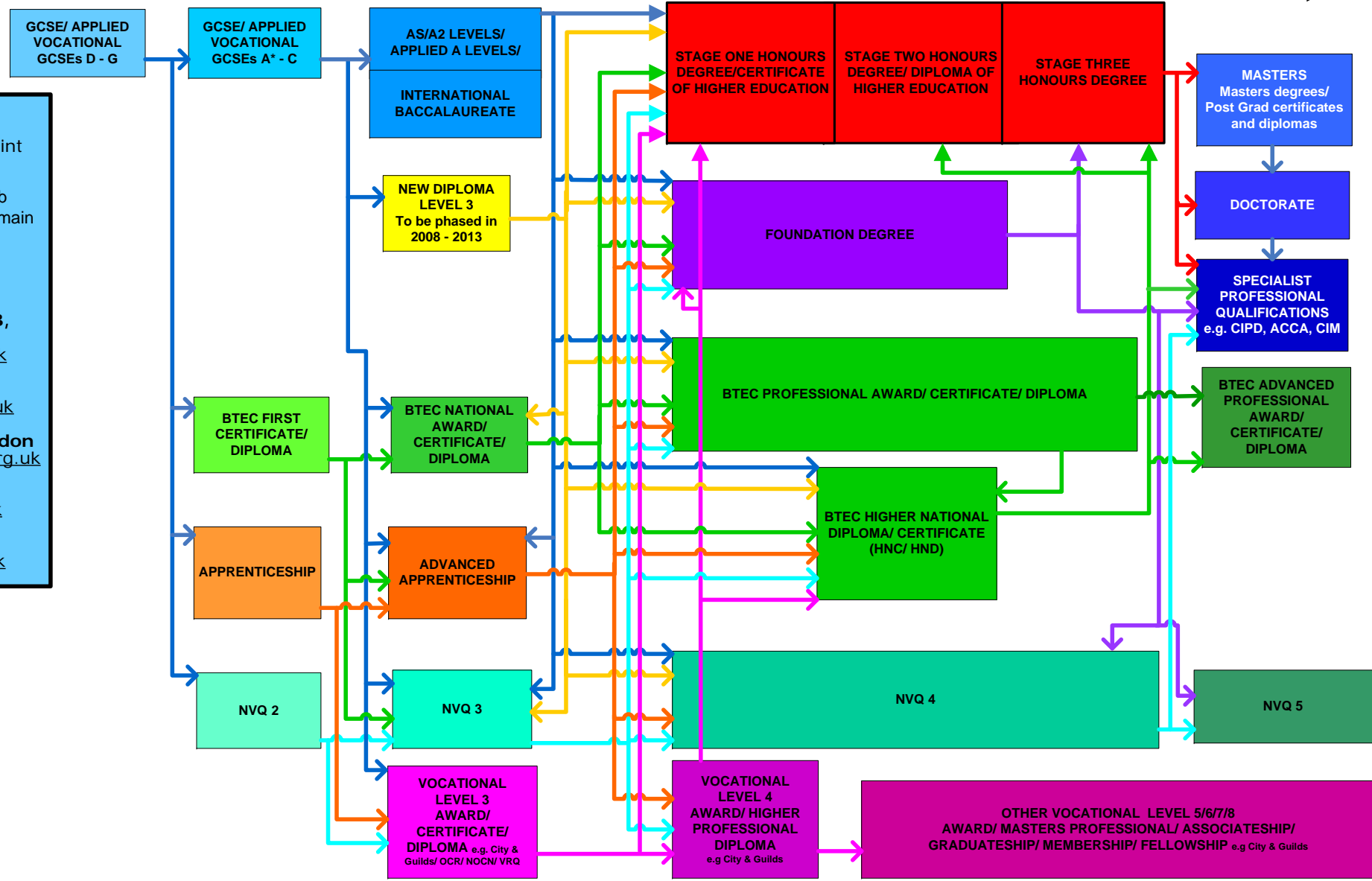
AQA (now includes NEAB, AEB + SEG)
www.aqa.org.uk

CCEA
www.ccea.org.uk

EdExcel / London
www.edexcel.org.uk

OCR
www.ocr.org.uk

WJEC
www.wjec.co.uk

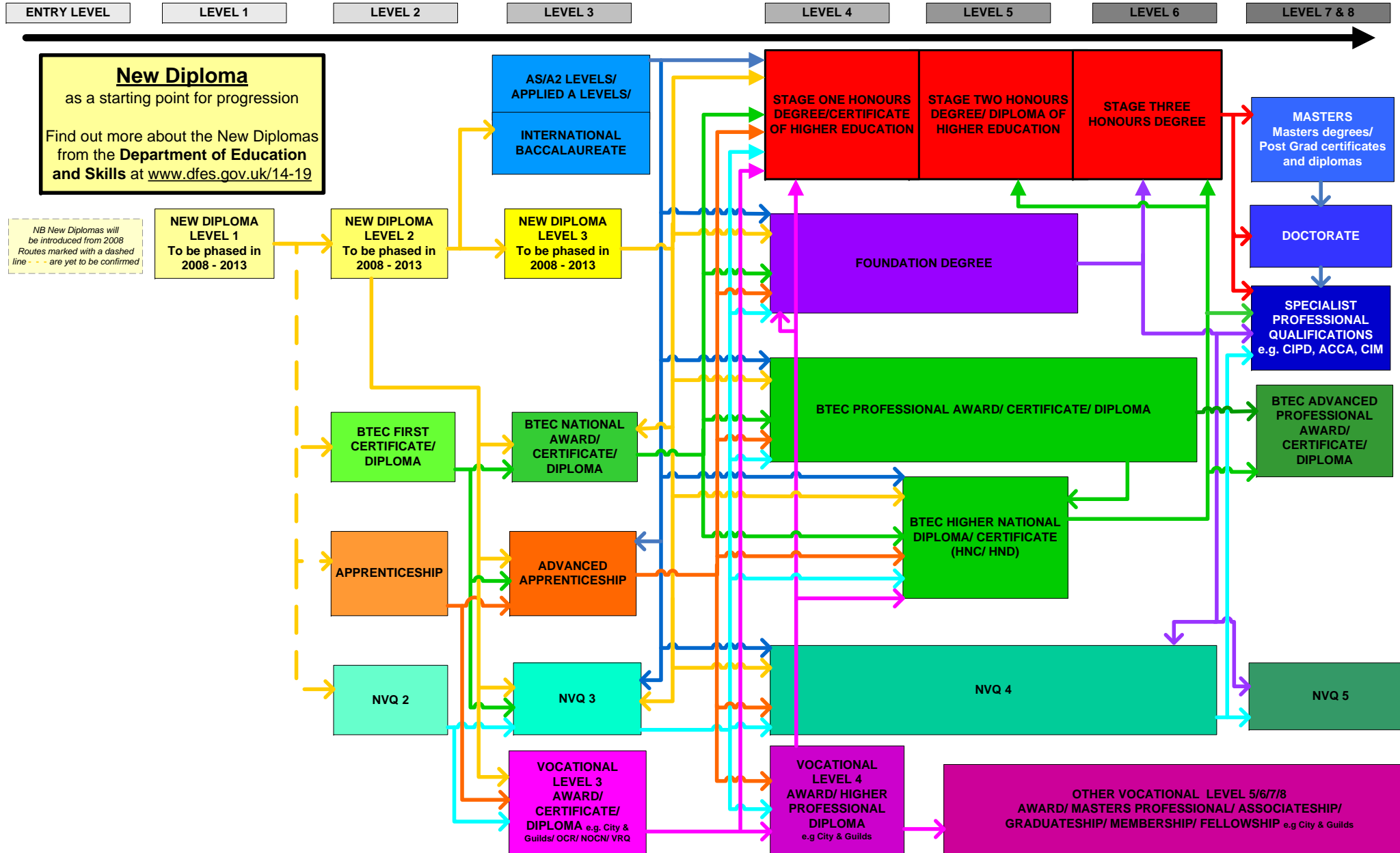


PLEASE NOTE: FURTHER EDUCATION = Level 3 courses, HIGHER EDUCATION = courses at level 4 and above

We have tried to include the major progression routes, however individuals may be able to progress via other routes. The information in this flowchart was correct at the time of going to print, however the following exclusions apply:

- Not every receiving institution will accept any level 3 qualification as an A level equivalent
- Not all of the above qualifications involve full-time study; many can be studied part time OR whilst in employment
- We have not been able to include subject specific qualifications such as CACHE or Foundation Art
- Many performing Arts qualifications e.g. ABRSM/ GSMD/ Trinity/ TVU and also British Horse Society Awards can provide additional UCAS points
- Additional entry and level 1,2 and 3 qualifications are available from ASDAN
- We have not included GNVQ/ AVCE as these are being phased out
- There are many work specific qualifications available e.g. CIM, ITEC, YMCA
- You do not necessarily have to work through the levels from entry up e.g. mature students with appropriate work experience may be able to study for a degree level qualification

APRIL 2007



PLEASE NOTE: FURTHER EDUCATION = Level 3 courses, HIGHER EDUCATION = courses at level 4 and above

We have tried to include the major progression routes, however individuals may be able to progress via other routes. The information in this flowchart was correct at the time of going to print, however the following exclusions apply:

- Not every receiving institution will accept any level 3 qualification as an A level equivalent
- Not all of the above qualifications involve full-time study; many can be studied part time OR whilst in employment
- We have not been able to include subject specific qualifications such as CACHE or Foundation Art
- Many performing Arts qualifications e.g. ABRSM/ GSMD/ Trinity/ TVU and also British Horse Society Awards can provide additional UCAS points
- Additional entry and level 1,2 and 3 qualifications are available from ASDAN
- We have not included GNVQ/ AVCE as these are being phased out
- There are many work specific qualifications available e.g. CIM, ITEC, YMCA
- You do not necessarily have to work through the levels from entry up e.g. mature students with appropriate work experience may be able to study for a degree level qualification

APRIL 2007

ENTRY LEVEL

LEVEL 1

LEVEL 2

LEVEL 3

LEVEL 4

LEVEL 5

LEVEL 6

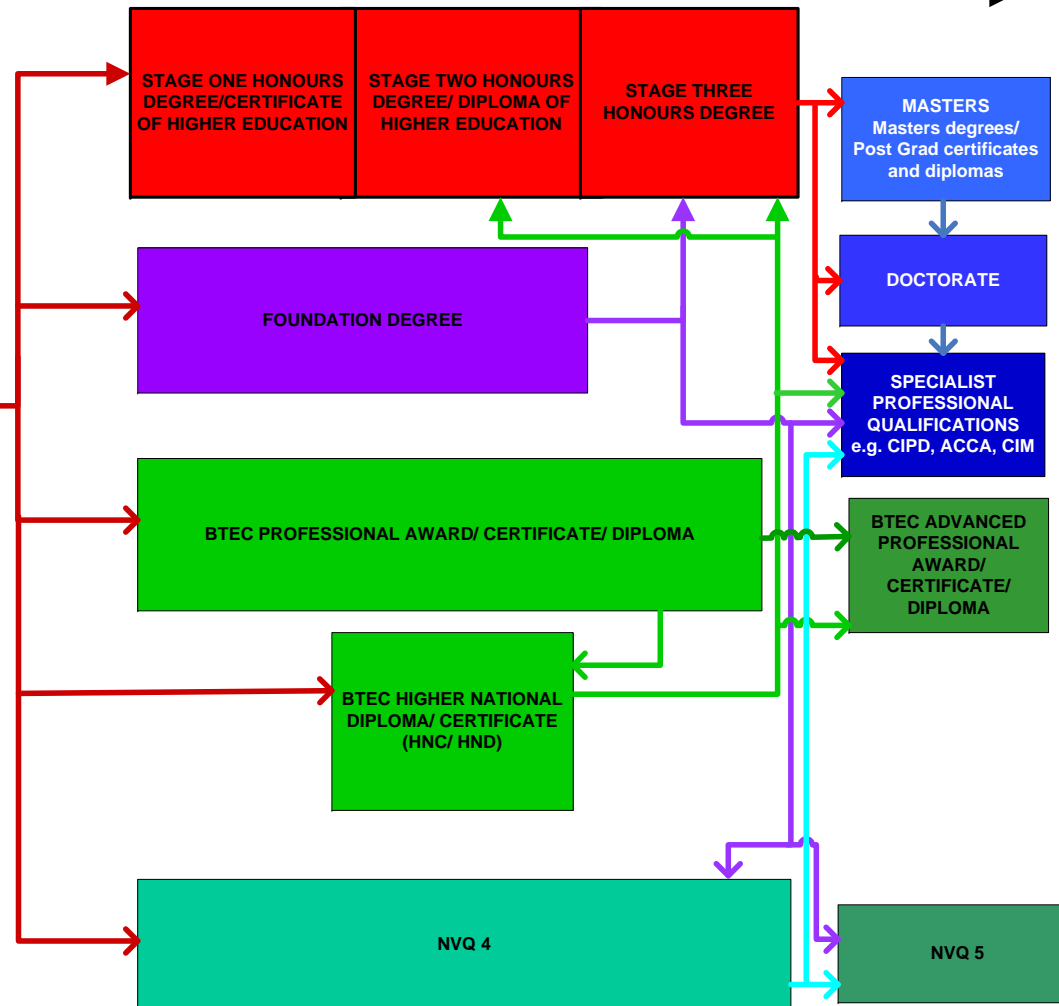
LEVEL 7 & 8

Access Diploma
as a starting point for progression

These courses are available at many FECs and HEIs so contact your local institution direct

Another useful source of information is the **Quality Assurance Agency for Higher Education** www.qaa.ac.uk

ACCESS DIPLOMA

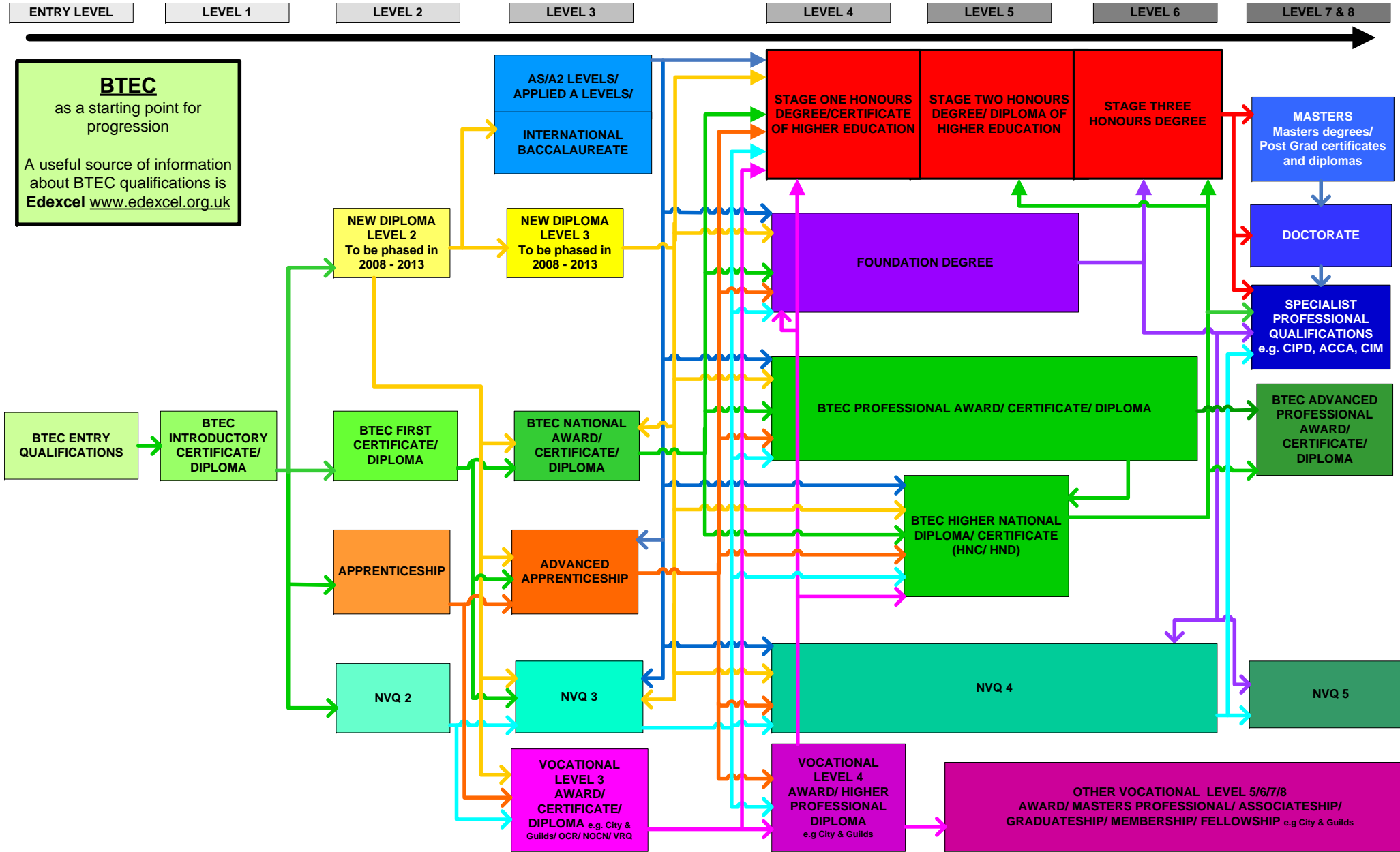


PLEASE NOTE: FURTHER EDUCATION = Level 3 courses, HIGHER EDUCATION = courses at level 4 and above

We have tried to include the major progression routes, however individuals may be able to progress via other routes. The information in this flowchart was correct at the time of going to print, however the following exclusions apply:

- Not every receiving institution will accept any level 3 qualification as an A level equivalent
- Not all of the above qualifications involve full-time study; many can be studied part time OR whilst in employment
- We have not been able to include subject specific qualifications such as CACHE or Foundation Art
- Many performing Arts qualifications e.g. ABRSM/ GSMD/ Trinity/ TVU and also British Horse Society Awards can provide additional UCAS points
- Additional entry and level 1,2 and 3 qualifications are available from ASDAN
- We have not included GNVQ/ AVCE as these are being phased out
- There are many work specific qualifications available e.g. CIM, ITEC, YMCA
- You do not necessarily have to work through the levels from entry up e.g. mature students with appropriate work experience may be able to study for a degree level qualification

APRIL 2007



We have tried to include the major progression routes, however individuals may be able to progress via other routes. The information in this flowchart was correct at the time of going to print, however the following exclusions apply:

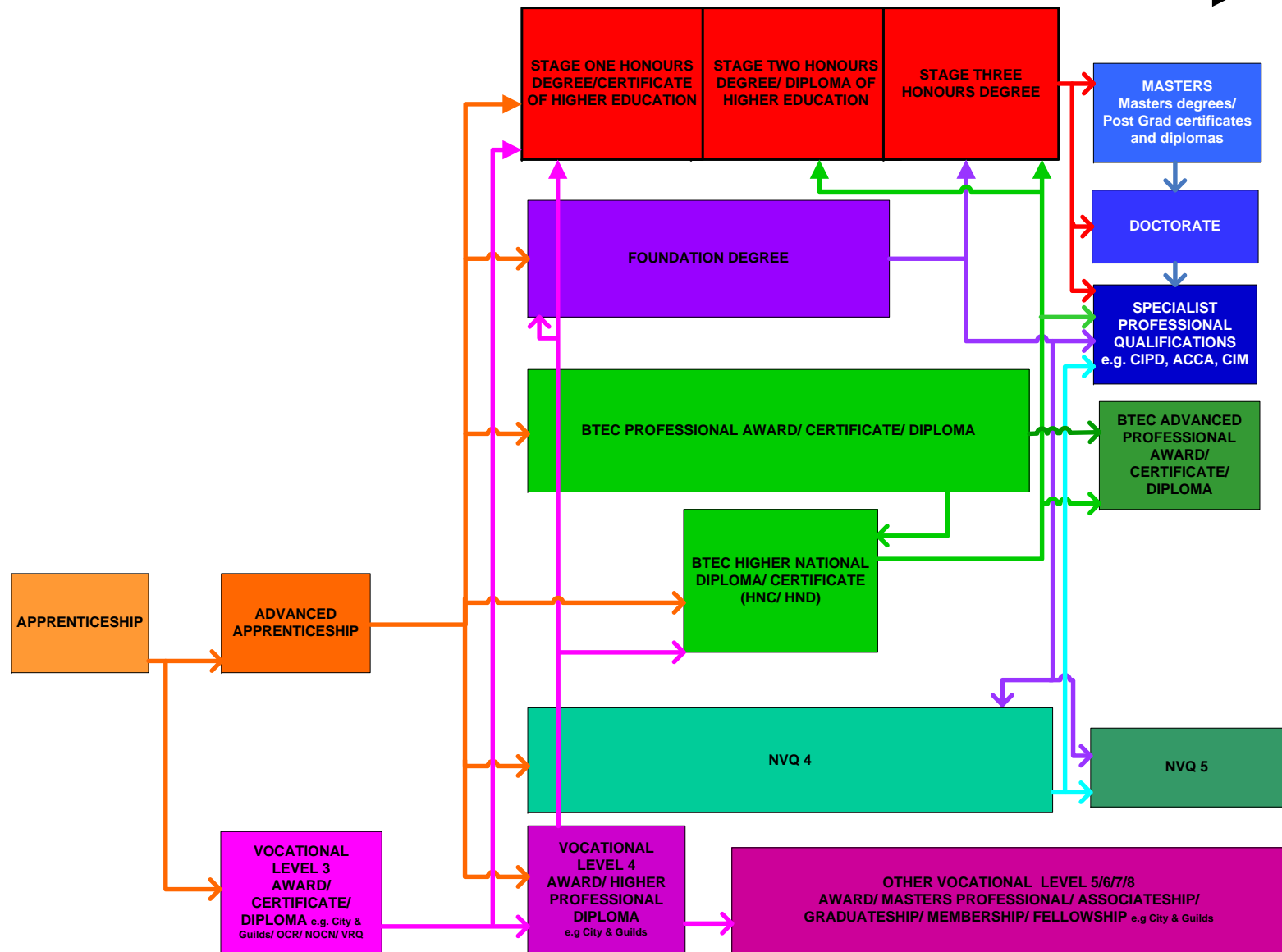
- Not every receiving institution will accept any level 3 qualification as an A level equivalent
- Not all of the above qualifications involve full-time study; many can be studied part time OR whilst in employment
- We have not been able to include subject specific qualifications such as CACHE or Foundation Art
- Many performing Arts qualifications e.g. ABRSM/ GSMD/ Trinity/ TVU and also British Horse Society Awards can provide additional UCAS points
- Additional entry and level 1,2 and 3 qualifications are available from ASDAN
- We have not included GNVQ/ AVCE as these are being phased out
- There are many work specific qualifications available e.g. CIM, ITEC, YMCA
- You do not necessarily have to work through the levels from entry up e.g. mature students with appropriate work experience may be able to study for a degree level qualification

APRIL 2007



Apprenticeships
 as a starting point for progression

A useful source of information about apprenticeships is the **Learning and Skills Council** apprenticeship website www.apprenticeships.org.uk

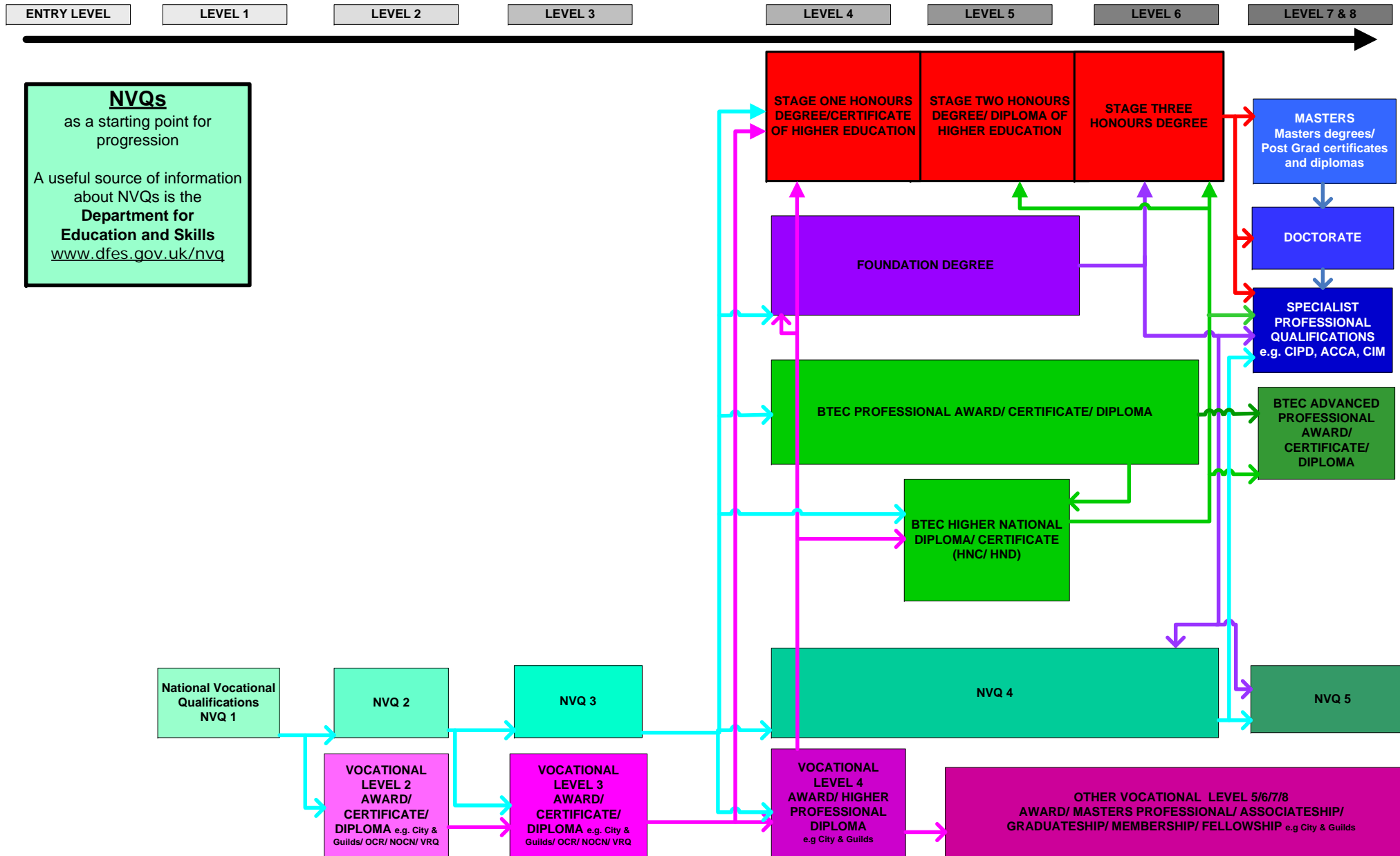


PLEASE NOTE: FURTHER EDUCATION = Level 3 courses, HIGHER EDUCATION = courses at level 4 and above

We have tried to include the major progression routes, however individuals may be able to progress via other routes. The information in this flowchart was correct at the time of going to print, however the following exclusions apply:

- Not every receiving institution will accept any level 3 qualification as an A level equivalent
- Not all of the above qualifications involve full-time study; many can be studied part time OR whilst in employment
- We have not been able to include subject specific qualifications such as CACHE or Foundation Art
- Many performing Arts qualifications e.g. ABRSM/ GSMD/ Trinity/ TVU and also British Horse Society Awards can provide additional UCAS points
- Additional entry and level 1,2 and 3 qualifications are available from ASDAN
- We have not included GNVQ/ AVCE as these are being phased out
- There are many work specific qualifications available e.g. CIM, ITEC, YMCA
- You do not necessarily have to work through the levels from entry up e.g. mature students with appropriate work experience may be able to study for a degree level qualification

APRIL 2007

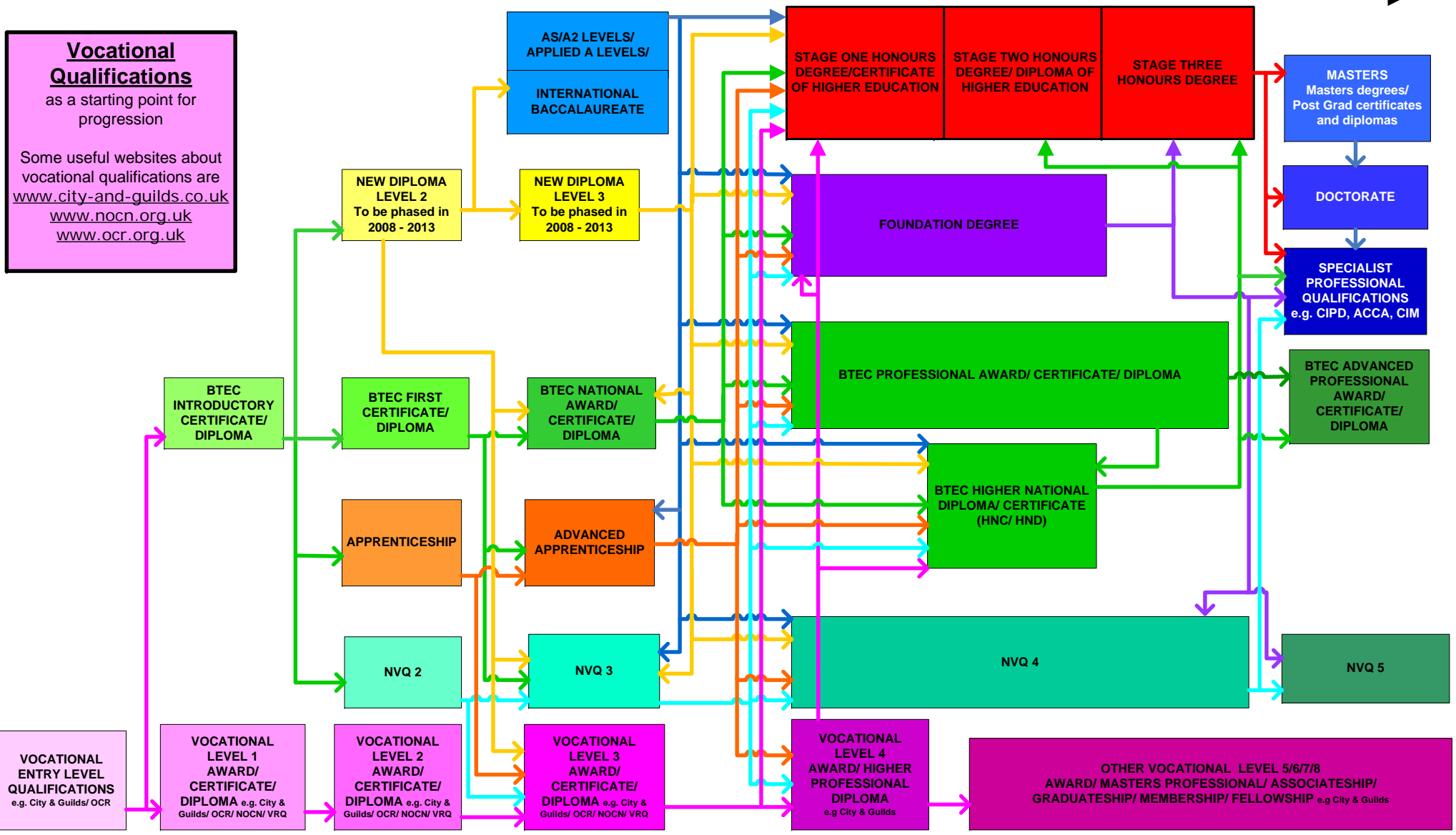
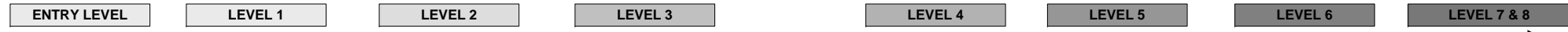


NVQs
as a starting point for progression

A useful source of information about NVQs is the **Department for Education and Skills**
www.dfes.gov.uk/nvq

PLEASE NOTE: FURTHER EDUCATION = Level 3 courses, HIGHER EDUCATION = courses at level 4 and above

- We have tried to include the major progression routes, however individuals may be able to progress via other routes. The information in this flowchart was correct at the time of going to print, however the following exclusions apply:
- Not every receiving institution will accept any level 3 qualification as an A level equivalent
 - Not all of the above qualifications involve full-time study; many can be studied part time OR whilst in employment
 - We have not been able to include subject specific qualifications such as CACHE or Foundation Art
 - Many performing Arts qualifications e.g. ABRSM/ GSMD/ Trinity/ TVU and also British Horse Society Awards can provide additional UCAS points
 - Additional entry and level 1,2 and 3 qualifications are available from ASDAN
 - We have not included GNVQ/ AVCE as these are being phased out
 - There are many work specific qualifications available e.g. CIM, ITEC, YMCA
 - You do not necessarily have to work through the levels from entry up e.g. mature students with appropriate work experience may be able to study for a degree level qualification



PLEASE NOTE: FURTHER EDUCATION = Level 3 courses, HIGHER EDUCATION = courses at level 4 and above

We have tried to include the major progression routes, however individuals may be able to progress via other routes. The information in this flowchart was correct at the time of going to print, however the following exclusions apply:

- Not every receiving institution will accept any level 3 qualification as an A level equivalent
- Not all of the above qualifications involve full-time study; many can be studied part time OR whilst in employment
- We have not been able to include subject specific qualifications such as CACHE or Foundation Art
- Many performing Arts qualifications e.g. ABRSM/ GSMD/ Trinity/ TVU and also British Horse Society Awards can provide additional UCAS points
- Additional entry and level 1,2 and 3 qualifications are available from ASDAN
- We have not included GNVQ/ AVCE as these are being phased out
- There are many work specific qualifications available e.g. CIM, ITEC, YMCA
- You do not necessarily have to work through the levels from entry up e.g. mature students with appropriate work experience may be able to study for a degree level qualification